

CERTIFICATE OF LOCATION OF GOVERNMENT CORNER

WEST 1/4 Corner of Section 16, Township 106, Range 43, 5TH P.M.

STATE OF MINNESOTA, County of MURRAY

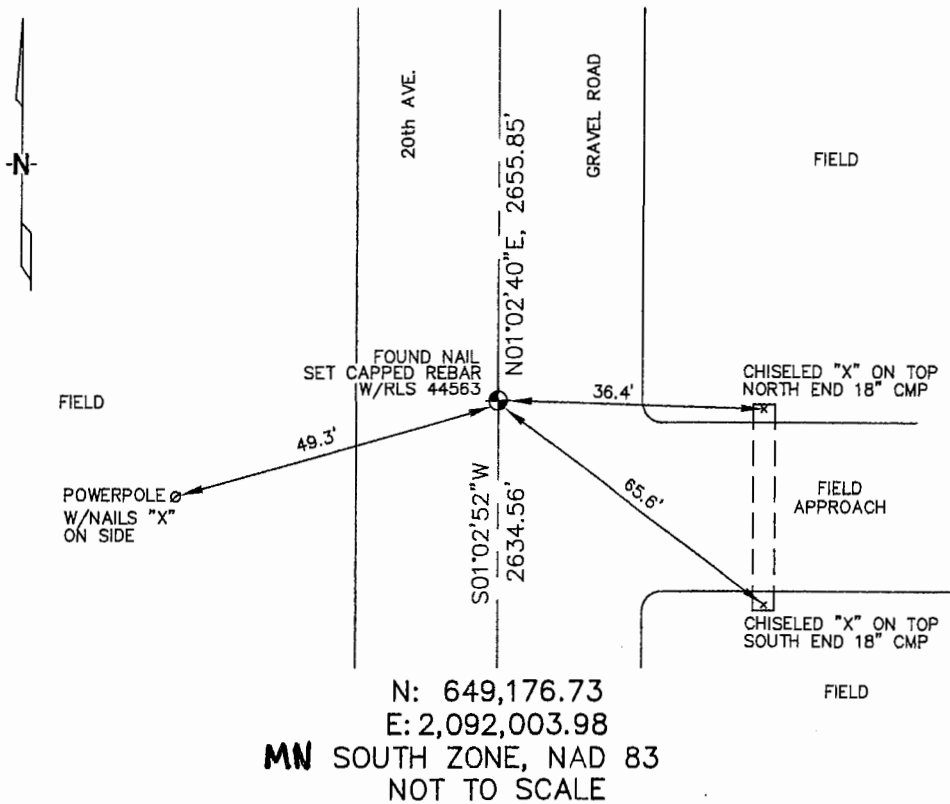
At the corner location shown on the sketch :

On 3/22/2006 found NAIL IN GRAVEL ROAD.

left monument as found, lowered monument, removed monument (explain)

On 3/22/2006 set 5/8" REBAR WITH CAP: RLS 44563.

Sketch of reference ties



Statement of evidence relative to this corner location is on back page

I hereby certify that this document and the data contained herein was prepared by me or under my direct supervision.

Thomas V. Zeff
Thomas V. Zeff

5/28/06
Date

Registration No. 44563

Land Surveyor, Professional Engineer

County Surveyor, County Engineer

OFFICE OF THE COUNTY RECORDER

County of _____

SEP 28 2006

I hereby certify that this document was filed in the Co. Recorders office at _____ .M. on the day of _____ A.D. , 20

County Recorder James V. Johnson

By _____, Deputy

DOCUMENT NO. _____

STATEMENT OF EVIDENCE:

WEST 1/4 CORNER, SECTION 16, T. 106 N., R. 43 W.,
MURRAY COUNTY, MINNESOTA

1866 J.W. BISHOP, U.S. DEPUTY SURVEYOR, MONUMENTED CORNER.

6/2/1927 MURRAY CO. HIGHWAY DEPT.
FOUND GRAY STONE, 10"X10"X16"

TIES: W - 34.3' TO FENCE CORNER
S - 8.5' TO FENCE LINE
E - 21.5' TO FENCE CORNER
S - 3.5' TO FENCE LINE

3/22/2006 ULTEIG ENGINEERS, INC. SURVEY CREW,
BRIAN PAYNE PARTY CHIEF
FOUND NAIL IN BROWN ROAD; DID NOT
FIND ANY FENCE LINES
SET 5/8" REBAR w/ CAP: RLS 44563 IN PLACE
OF NAIL.

TIES: SW - 49.3' TO POWER POLE WITH NAILED
"X" ON SIDE OF POLE.

E - 36.4' TO CHISELED "X" ON TOP
OF N. END OF 18" C.M.P.

SE - 65.6' TO CHISELED "X" ON TOP
OF S. END OF 18" C.M.P.

N - 2655.85' TO NW CORNER, SEC 16.

S - 2634.56' TO SW CORNER, SEC 16.